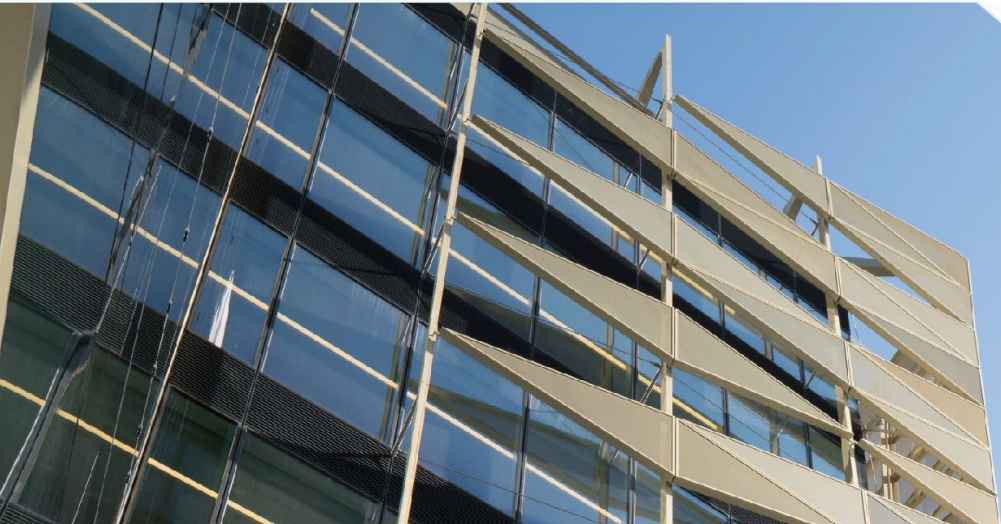




Banc Ceannais na hÉireann  
Central Bank of Ireland

Eurosystem



# Solvency II quantitative reporting 2026 submission dates

## Undertakings with 31 December year-end

	Reference date	Submission deadline date	
		Solo	Group
Annual returns	31-Dec-25	08-Apr-26	20-May-26
	31-Dec-26	08-Apr-27	20-May-27
Quarterly returns	31-Dec-25	04-Feb-26	18-Mar-26
	31-Mar-26	05-May-26	16-Jun-26
	30-Jun-26	04-Aug-26	15-Sep-26
	30-Sep-26	04-Nov-26	16-Dec-26
	31-Dec-26	04-Feb-27	18-Mar-27



## Including Non-standard year-end dates

Reference date	Quarterly		Annual	
	Submission deadline date		Submission deadline date	
	Solo	Group	Solo	Group
31-Dec-25	04-Feb-26	18-Mar-26	08-Apr-26	20-May-26
31-Jan-26	07-Mar-26	18-Apr-26	09-May-26	20-Jun-26
28-Feb-26	04-Apr-26	16-May-26	06-Jun-26	18-Jul-26
31-Mar-26	05-May-26	16-Jun-26	07-Jul-26	18-Aug-26
30-Apr-26	04-Jun-26	16-Jul-26	06-Aug-26	17-Sep-26
31-May-26	05-Jul-26	16-Aug-26	06-Sep-26	18-Oct-26
30-Jun-26	04-Aug-26	15-Sep-26	06-Oct-26	17-Nov-26
31-Jul-26	04-Sep-26	16-Oct-26	06-Nov-26	18-Dec-26
31-Aug-26	05-Oct-26	16-Nov-26	07-Dec-26	18-Jan-27
30-Sep-26	04-Nov-26	16-Dec-26	06-Jan-27	17-Feb-27
31-Oct-26	05-Dec-26	16-Jan-27	06-Feb-27	20-Mar-27
30-Nov-26	04-Jan-27	15-Feb-27	08-Mar-27	19-Apr-27
31-Dec-26	04-Feb-27	18-Mar-27	08-Apr-27	20-May-27

