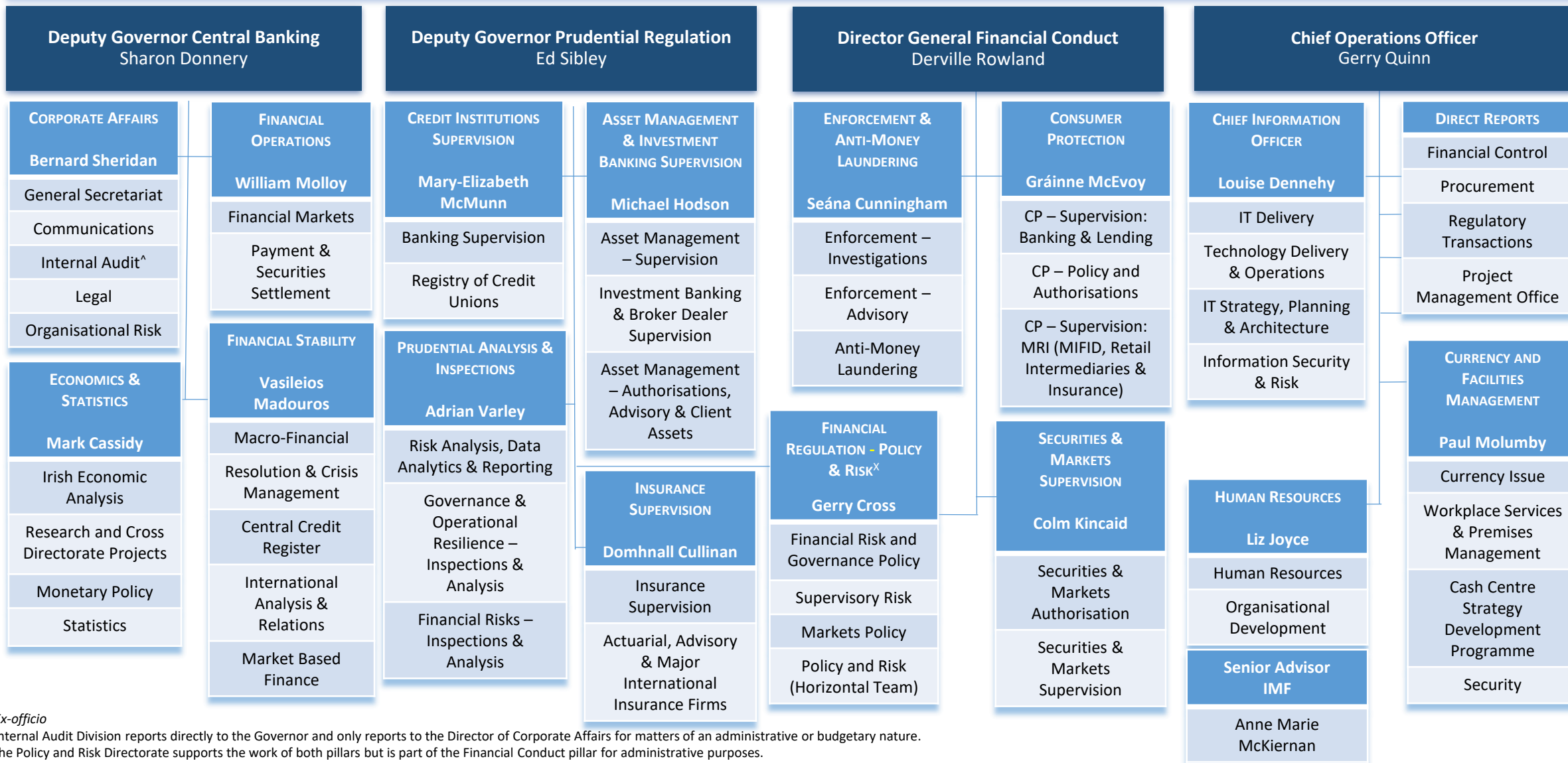


Central Bank Commission
 Gabriel Makhlouf*, Sharon Donnery*, Alan Ahearne, Patricia Byron, John FitzGerald,
 Niamh Moloney, Derek Moran*, Ed Sibley*, John Trethowan, Neil Whoriskey (Secretary)

Governor
 Gabriel Makhlouf



* Ex-officio
 ^ Internal Audit Division reports directly to the Governor and only reports to the Director of Corporate Affairs for matters of an administrative or budgetary nature.
 x The Policy and Risk Directorate supports the work of both pillars but is part of the Financial Conduct pillar for administrative purposes.